

Drought Impacts in SACRAMENTO VALLEY RICE COUNTRY

A third straight year of drought has wide-ranging impacts beyond rice farms

Community | Farming



Less rain and snow means less water devoted to agriculture.



Reduced planting means less work available in rural farming communities.



Unprecedented seasonal job losses expected, with rice mills, dryers and suppliers seeing the worst of it.

California is the nation's second largest rice-growing state.

\$5 billion/year

industry braced for a major economic hit.

Local farming businesses and communities across the state face an unprecedented crisis, one where California Agriculture may never fully recover.

Environment | Wildlife

Natural wildlife habitat is shrinking, making water on rice fields more vital than ever.

Nearly 230 wildlife species

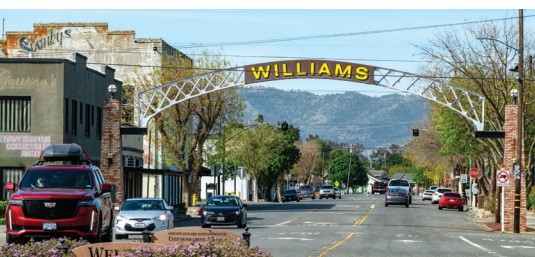
depend on Sacramento Valley rice fields for their survival.

7-10 million birds

along the Pacific Flyway rely on flooded fields for food and a resting place.



Rice fields act as surrogate wetlands for wildlife, largely replacing California's historic wetlands.



Drought diminishes California's rice crop

Down 50% of average

Season average
500,000 acres

2022 season estimates*
250,000 acres

